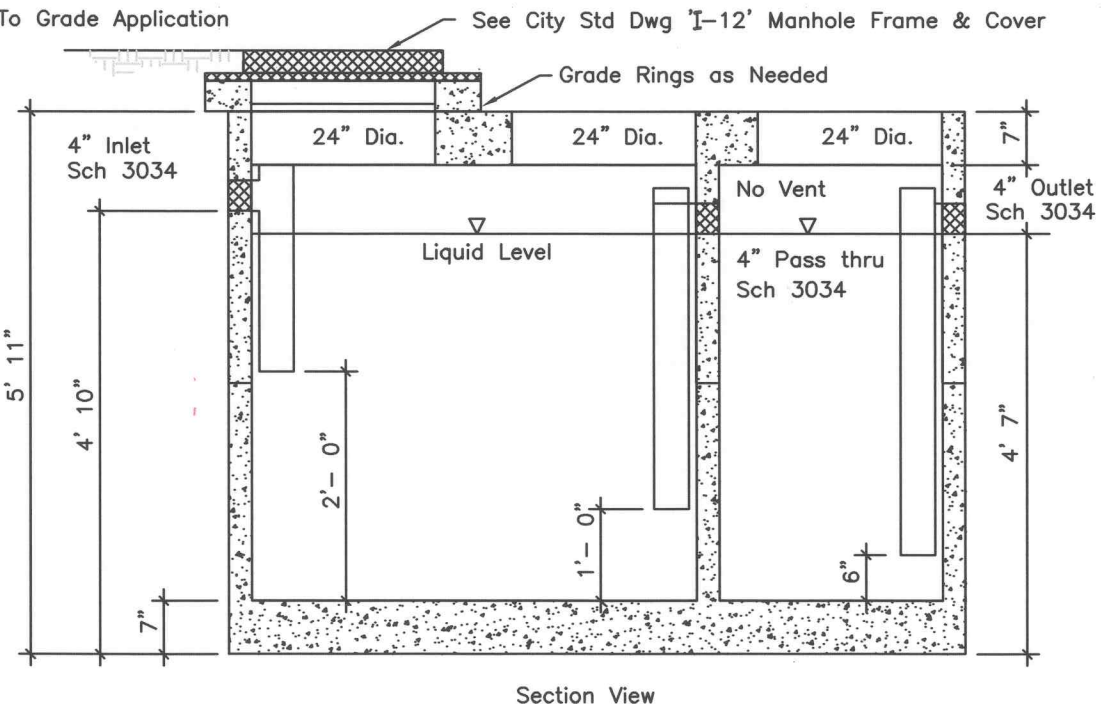


TYPICAL:

To Grade Application



Reinforcing:

#4 Bars @ 12" O.C. Lengthwise. in Top

#5 Bars @ 9" O.C. Widthwise in Top

6x6 10 Ga. Wire Mesh in Sides & Bottom

(WILBERT PRECAST PRODUCT #

1634M G/I - 1654TB - HEAVY LOAD OPTION OR APPROVED EQUIVALENT)

CITY OF LEWISTON, IDAHO
PUBLIC WORKS DEPARTMENT

1500 GALLON
GREASE INTERCEPTOR

APPROVED FOR PUBLICATION

Shawn Stalder 6/2/10
City Engineer Date

DWG. NO.

I-3